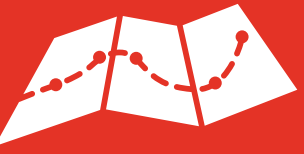




# MERRITTS NATURE TRACK

SELF  
GUIDED  
HIKE



**DISTANCE**  
4km



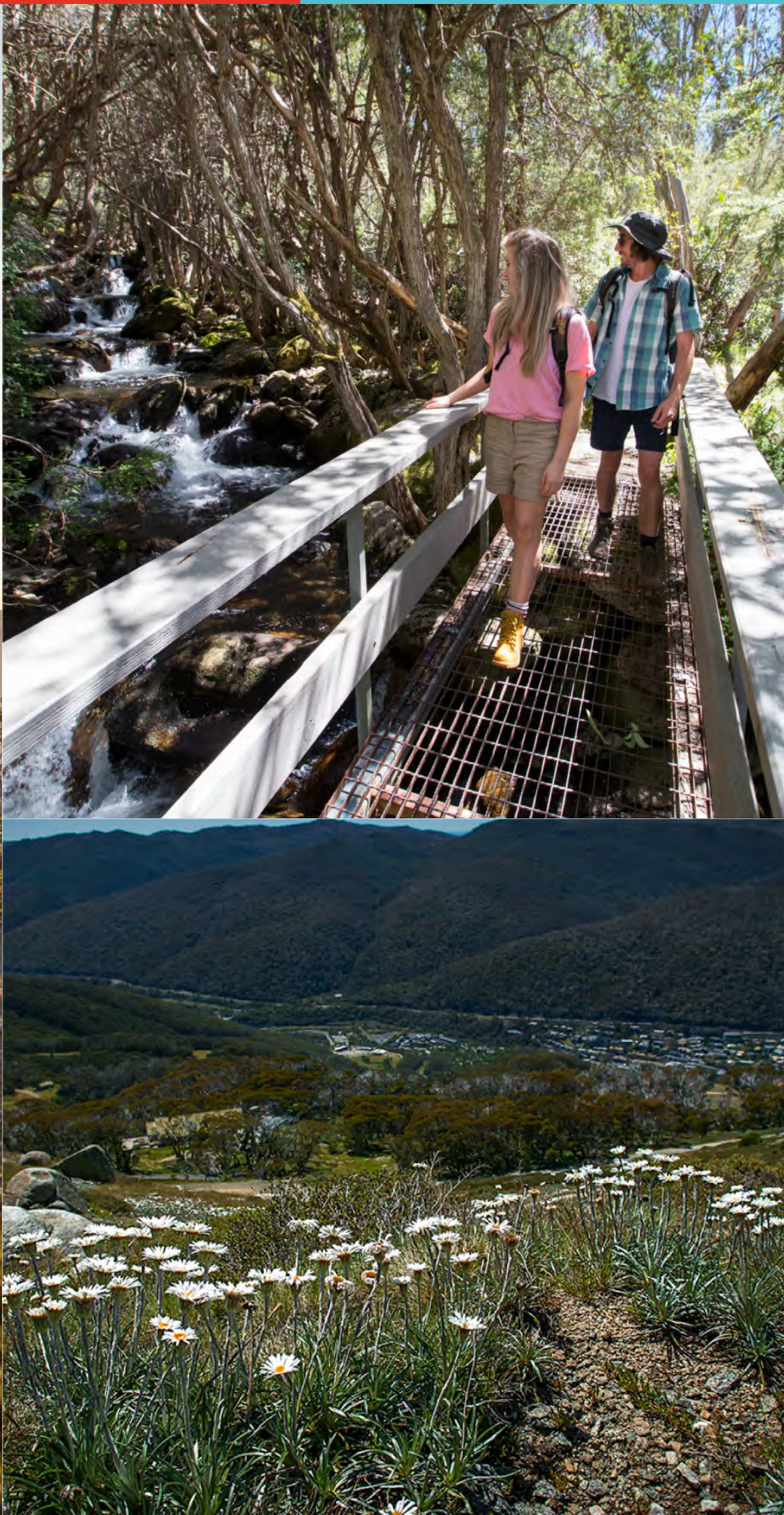
**TIME**  
2-3 Hours



**GRADE 3 HIKE**  
Bushwalking experience  
recommended



**BEST TIME TO GO**  
November to April



# MERRITTS NATURE TRACK



## OVERVIEW

One of Thredbo's best short hikes! Ride the Kosciuszko Chairlift to reach the rooftop of Australia and start your hike at 1937m. Descend through three stunning vegetation zones and over rushing alpine streams. This hike showcases the region's rare and iconic flora and fauna including Snow Gums, Alpine Ash, native flowering plants, wombat burrows and more.

## HIGHLIGHTS

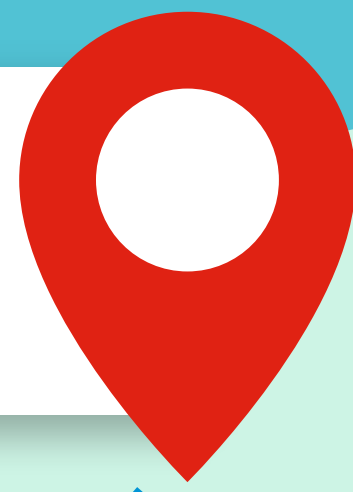
- ▶ Descend through three distinct vegetation zones
- ▶ Iconic twisted Snow Gums
- ▶ Thredbo Valley views
- ▶ Varied native flora and fauna including flowering natives (season dependant)
- ▶ Bridges crossing Merritts Creek

**FOLLOW  
THE MAP**



## YOUR WALK BEGINS...

At the top of the Kosciuszko Chairlift



Merritts Creek

1

1850m

Top of Snowgums Chair

2

1849m to 1400m

KOSCIUSZKO CHAIRLIFT

Stair zone

Picnic lookout

Lower bench seat lookout

Bunny walk Station

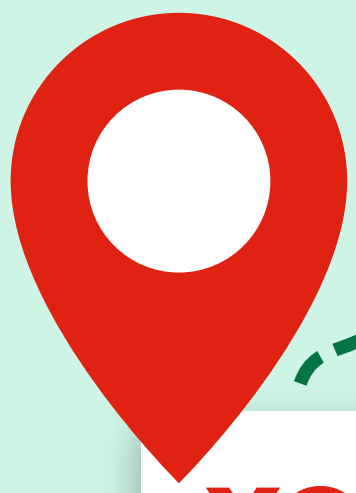
3

1349m to 1100m

Birrallee Bush Camp

Village Weir

Wooden Bridge under Gondola



## YOUR WALK ENDS...

At the paved path between Valley Terminal and Woodridge

### ⚠️ IMPORTANT INFO

Observe the [Hiking Responsibility Code](#) for a great experience



Wear sturdy walking boots or shoes - this hike has steep and uneven sections



Preparation is key - pack water, sunscreen and a hat



Respect our native animal friends and observe from a distance



Take a camera or phone...there'll be plenty to capture!



Restrooms available at Eagles Nest Restaurant at the start of the hike



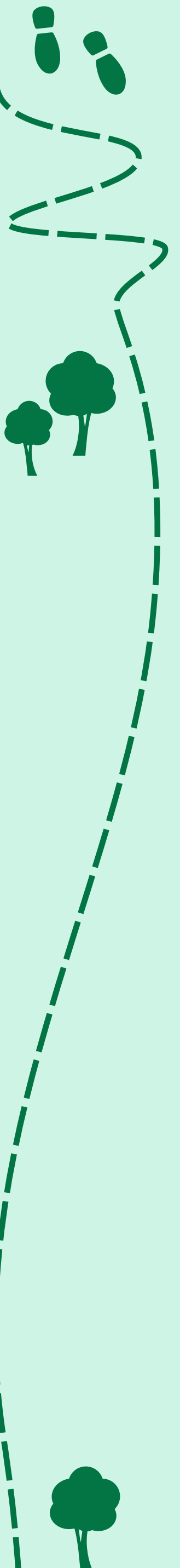
1

## ALPINE ZONE

**The first part of your hike sees you walking through the unique Alpine Zone.**

This zone is shaped by year-round extreme weather conditions (including snow cover) and is too harsh for trees to successfully germinate.

Walk past granite tors, up to 212 native flowering plants including 21 endemic species and sphagnum moss that grows on wet sites. The yellow gold to lime green moss are the breeding grounds for the critically endangered Southern Corroboree Frog. Common Eastern Froglets and tadpoles can also be heard and seen swimming for the careful eye. The moss is fragile so please avoid walking on these areas.





2

## SUBALPINE ZONE

**The Subalpine Zone is home to our iconic twisted Snow Gums.**

Snow Gums provide a protective canopy for sweetly scented shrubs like the yellow flowered Ivy Goodenia. Keep an eye out for Mountain Plum Pines, the oldest trees in the alpine. These trees live up to 800 years and are a favourite food source for the endangered Mountain Pygmy Possum.

Listen to the calls of the area's 200 altitudinal migratory bird species including vulnerable Gang-gang Cockatoos, Blue Crimson Rosellas, Tree Creepers and Thornbills.



3

## MONTANE ZONE

**As you descend into the valley the vegetation grows bigger and turns to Alpine Ash forest.**

Alpine Ash reach maturity at 20 years, live up to 500 years, grow up to 90m and are obligate seeders (regenerate after fire from seed). They are also home to the protected Yellow-tailed Black-Cockatoo.

As you cross over Merritts Creek you can feel the air cool and the trees turn to Black Sallee forest, Alpine Myrtle Heath and Mint Bush. Woolly Tea-Tree, flowering white in spring, line the picturesque creek and its moss covered rocky banks. At the bottom of the trail wombat burrows can be seen near the Thredbo River.

**LOVED THIS HIKE AND WANT TO LEARN MORE?**

Take a hike with our local guides...

visit [thredbo.com.au/hikes](https://thredbo.com.au/hikes) to find out more